

QC11 新特性

继 QC11 的下一个版本, HP 已经把名字改为 HP Application Lifecycle Management 11.00 (HP ALM)。它是一个软件的集合体, 在本文中我暂且称它为 QC11 吧。

一、安装配置变化

1、首先来看一下 HP 官方给的安装 QC11 的推荐配置:

Operating Systems	Windows Server 2008 (SP2) 64 bit Windows Server 2003 (SP2) 64 bit or 32 bit Sun Solaris 10 64 bit Linux Red Hat 5.4 Linux Suse 10 64 bit HP-UX 11i v3 64 bit Notes: <ul style="list-style-type: none">For large production deployments, it is recommended that ALM be deployed on 64 bit systems.Localized editions of ALM are supported only on Windows operating systems.
Application Servers	JBoss 5.1 WebLogic 10.3.x WebSphere 7.0.0.9
Database Servers	Oracle 11.2.0.1 or 10.2.0.4 Microsoft SQL 2008 (SP1) or 2005 (SP3)
Web Servers	JBoss 5.1 Apache 2.2 IIS 7 or 6 WebLogic 10.3.x IHS Server

以上是服务器安装配置推荐,最大的变化就是支持了 Oracle 11 数据库了。QC10.0 对 Oracle 的支持, 只支持 Oracle 10 及其以下版本。

2、客户端要求

Operating System	<ul style="list-style-type: none">Windows 7 32 bit (Recommended)Windows Vista (SP1) 32 bitWindows XP (SP3) 32 bit
-------------------------	---

	<p>Notes:</p> <ul style="list-style-type: none"> • If you are integrating ALM with other HP testing tools, you must modify the DCOM permissions on your client machine. For more information, see HP Software Self-solve knowledge base article KM118706. • You can work with the ALM client using a remote desktop.
Browser	<p>Microsoft Internet Explorer 7 or 8</p> <p>Note: For customers who have restrictions on plugins in their browsers, such as ActiveX, ALM can be loaded in the HP ALM Explorer Add-in. For more information on downloading and installing the add-in, refer to the <i>HP Application Lifecycle Management Installation Guide</i>.</p>
Prerequisites	<ul style="list-style-type: none"> • Visual C++ 2005 SP1 ATL Security Update Redistributable • Microsoft .NET Framework 3.5 (SP1) • Microsoft Office 2007 (SP2)

QC11 客户端不支持 IE6.0 了。这是最大的变化。现在只支持 IE7.0 和 IE8.0，并且要在客户端同时安装 Visual C++ 2005 SP1 ATL Security Update Redistributable 和 Microsoft .NET Framework 3.5 (SP1)，才能使用。

Note: 如何安装QC11，请参看我的另一篇文章《[QC11 安装](#)》。值得庆幸的是，QC10 的license，在QC11 中照样可以使用。

二、QC11 新特性

1、HP ALM

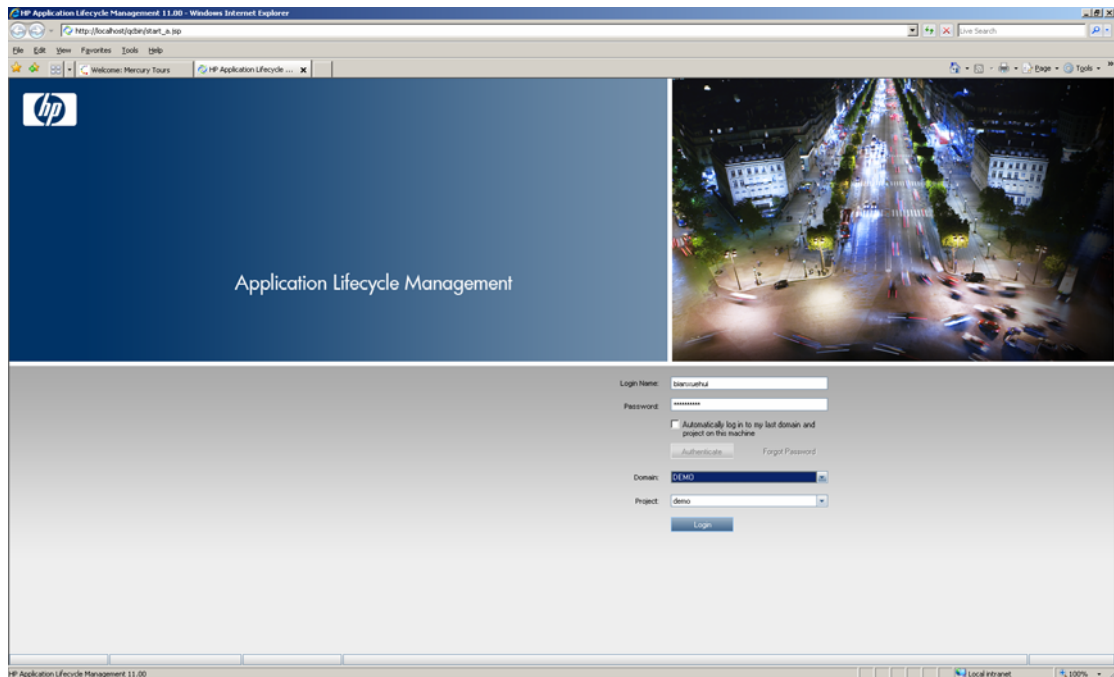
HP ALM 包含：

HP ALM Edition	Description
HP ALM	Complete HP ALM functionality, providing core functionality for managing the Application Lifecycle and scalable Quality Management for mature organizations and Centers of Excellence (CoE) involved with managing enterprise releases.
HP Quality Center Starter Edition	For quality management teams managing small releases.
HP Quality Center Enterprise Edition	For quality management teams managing medium to large releases.
HP ALM Performance Center Edition	For managing all aspects of large-scale performance testing projects.

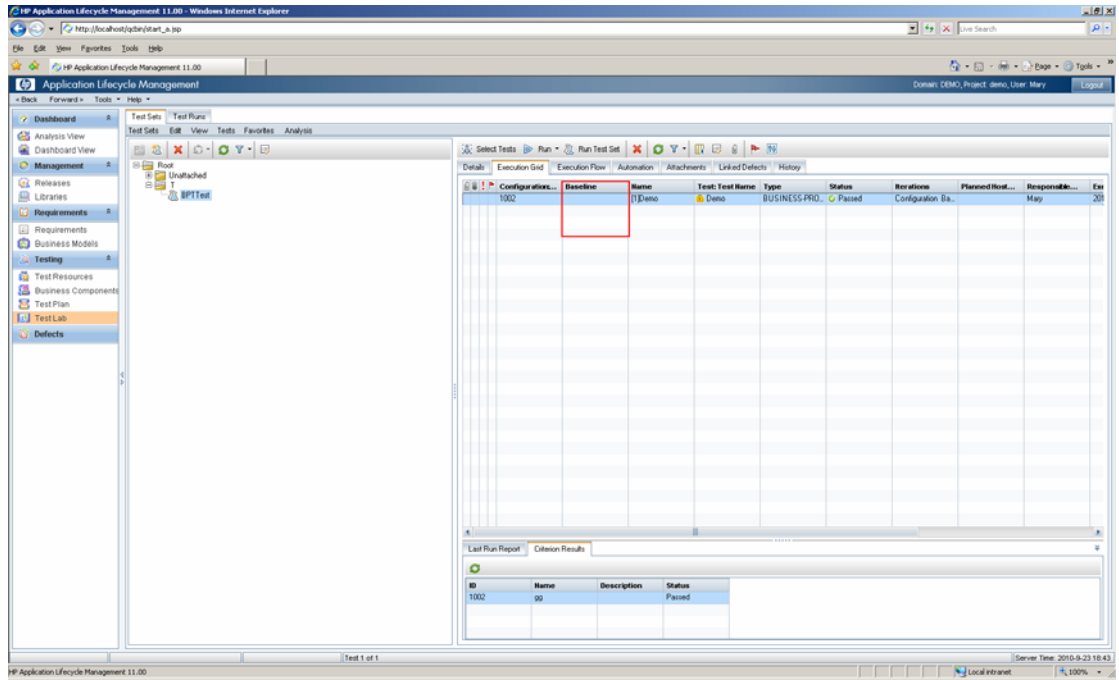
2、Business Process Testing

QC11中，也支持BPT，而且改进了不少。同时在Quality Center Starter Edition and the Quality Center Enterprise Edition两个版本中都加入了对BPT的支持。在资源管理和版本控制方面都有了改进。

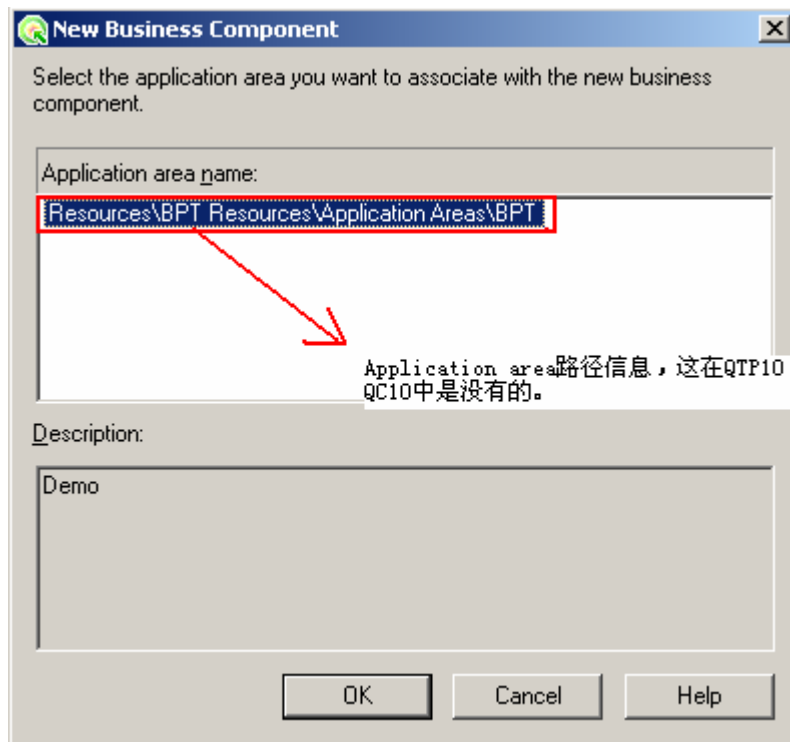
- a.在性能方面有了改进。个人感觉比 QC10 要稍微快一点。
- b. UI 界面发生很大变化，增强了某些功能。如下图所示：



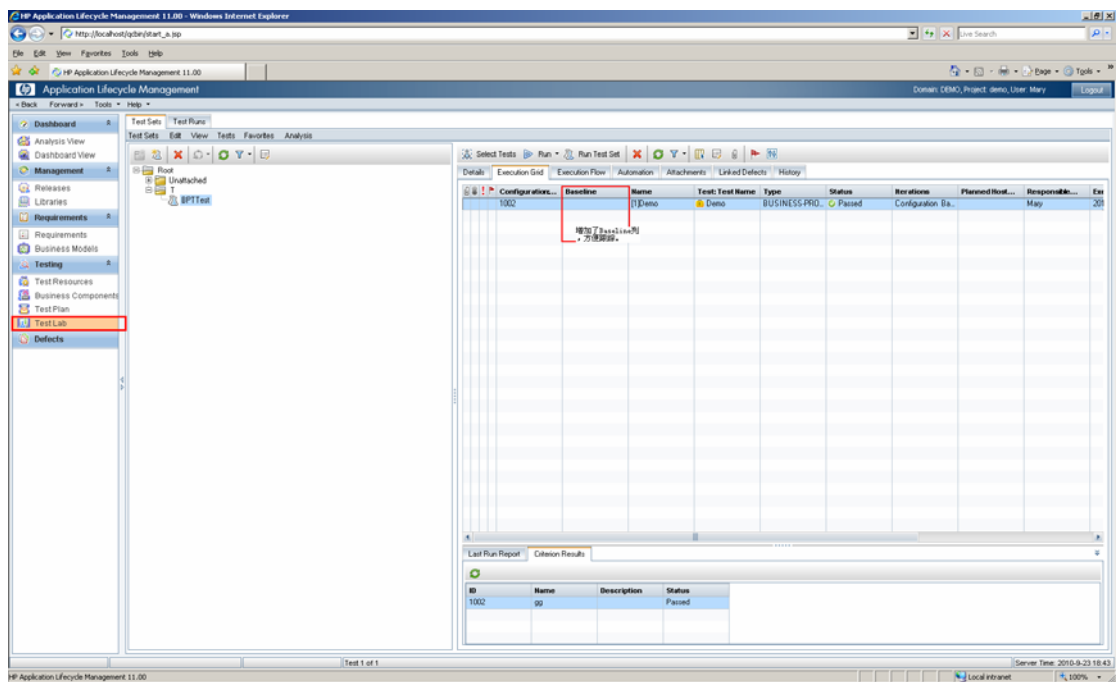
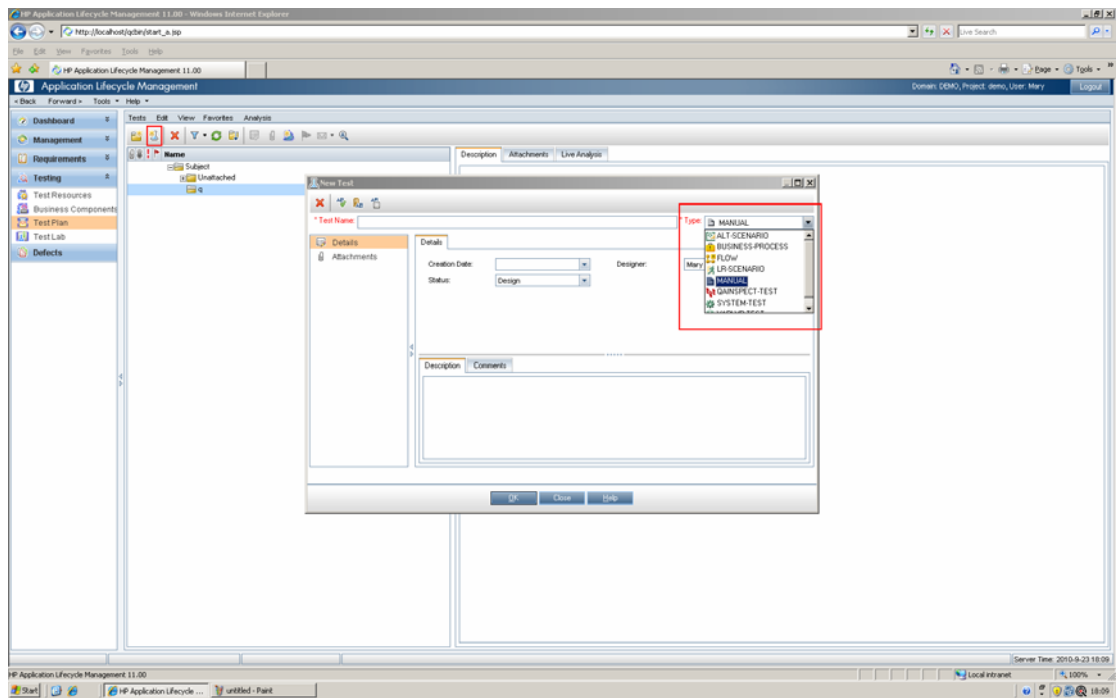
登陆界面



登陆后的界面

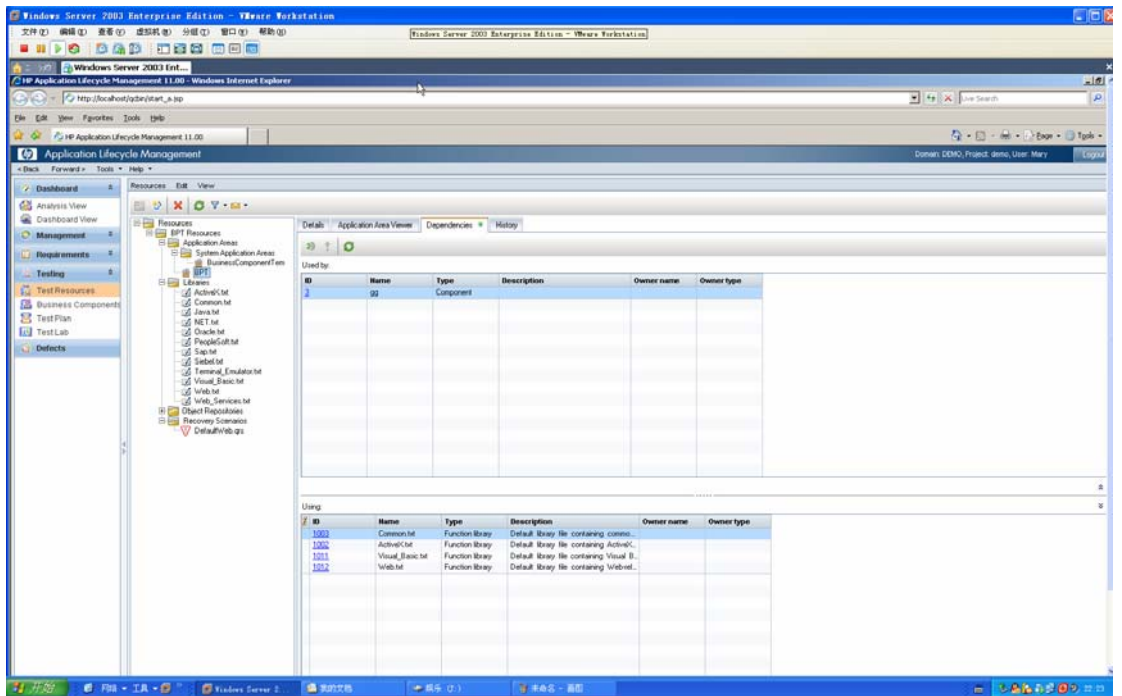


一些小的细节方面的改变，如下图所示：



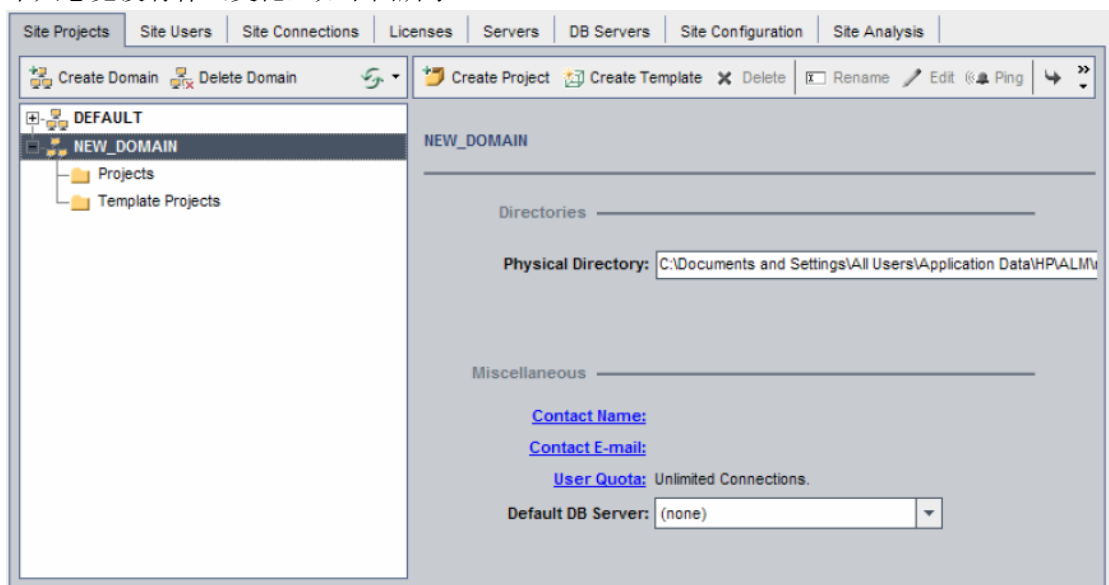
C. Application area 的改进。我觉得这个是最大的变化。

QC11 以前版本，要创建 Application area，只能通过 QTP 来创建，而且创建完毕之后，在 QC 中无法显示出来，不方便维护和管理。现在可以直接在 QC11 中的 Test Resource 模块中创建和管理。如下图所示：



3、QC11 管理后台

个人感觉没有什么变化，如下图所示：



联系方式：

TIB 工作室

<http://www.cnblogs.com/testware>

QQ: 251233507

MSN:Eric.bian@hotmail.com

软件本地化回归测试自动化解决方案